

# Generations Intact 2500

Species : Red Oak • White Oak • Hard Maple

Made in Canada 

## Platforms

Engineered 1/2 in.



Engineered 3/4 in.



## Specifications

	Engineered 1/2 in			Engineered 3/4 in			
Thickness	1/2 in (13 mm)			3/4 in (19 mm)			
Width	3 1/4 in (83 mm)	4 1/2 in (114 mm)	6 1/2 in (165 mm)	4 1/2 in (114 mm)	6 1/2 in (165 mm)	8 1/8 in (206 mm)	8 1/8 in PLUS (206 mm)
Surface Layer	Thin sawing 4 mm		Thin sawing 2,35 mm	Thin sawing 4 mm			
Substrate (Baltic Birch plywood)	7 cross-ply		8 cross-ply	11 cross-ply			
Length	12 in to 86 in (300 mm to 2184 mm)	12 in to 85 in (300 mm to 2159 mm)	12 in to 84 in (300 mm to 2134 mm)	12 in to 85 in (300 mm to 2159 mm)	12 in to 84 in (300 mm to 2134 mm)	18 in to 85 in (406 mm to 2159 mm)	60 in to 87 in (1524 mm to 2210 mm)
Profiling	Micro V-joint on 4 sides			Micro V-joint on 4 sides			
Moisture content	Between 6% & 9%			Between 6% & 9%			

## Grades

- SB Select & Better** : Clear and uniform appearance; slight variations of natural tones
- RQ Rift & Quarter Sawn** : Clear and uniform appearance; slight variations of natural tones (White Oak only)
- DS Distinction** : Moderate selection of natural tones and character marks
- AT Authentic** : Contrasted appearance; pronounced variations between boards and presence of character marks
- PL PLUS** : Rich and moderately contrasting appearance, slight to moderate tonal variations and presence of character marks

## VOC / Formaldehyde

VOC-free and formaldehyde-free finish: ASTM D-5116

Greenguard Gold Certification: All species, widths, colors and finishes.

Phthalate-free finish: OSHA method 104

### Maximum Greenguard Gold emission criteria

TVOC	≤ 0.22 mg/m <sup>3</sup>
Formaldehyde	≤ 0.0073 ppm
Total Aldehydes	≤ 0.043 ppm
IVOCs	≤ 1/100 TLV et ≤ 1/2 chronic REL

According to ASTM D-5116 method

# Generations Intact 2500

## Finish

### Generations Intact 2500 Finish

Commercial use finish composed of microfragmented aluminum particles (AL<sub>2</sub>O<sub>3</sub>) in suspension in a UV-cured polyurethane resin.



#### Commercial Gloss

This limited reflection gloss minimizes the appearance of surface marks and allows for optimal maintenance.



#### Non-yellowing

The non-yellowing formula in the finish reduces the natural wood board yellowing process.



#### Antimicrobial

The ULTRA-FRESH™ antimicrobial added to the finish limits the risk of bacteria and mildew growth on the finished surface.



#### Maintenance

Clean floor using Mercier's maintenance products or a well wrung mop with mild pH neutral soap

## Warranty

10 years on finish wear for light commercial use

3 years on finish wear for use with direct outdoor access

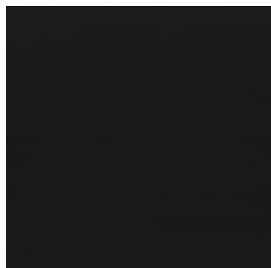


## Colors

### Red Oak



Copper



Onyx



Marble



Smokey Quartz

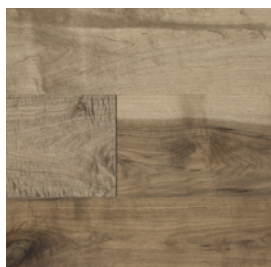


Talc

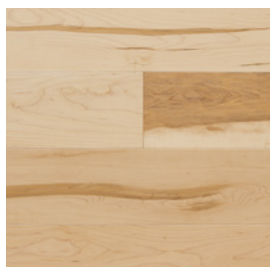
### Hard Maple



Basalt



Mica



Silica

### White Oak



Dolomite



Pearl

# Generations Intact 2500

## Installation



Basement = **yes**  
Floor = **yes**

### Subfloor

- OSB or 3/4 in. plywood: joists spaced no more than 19 in. C-C
- 5/8 in. plywood: joists spaced no more than 16 in. C-C
- Concrete slab

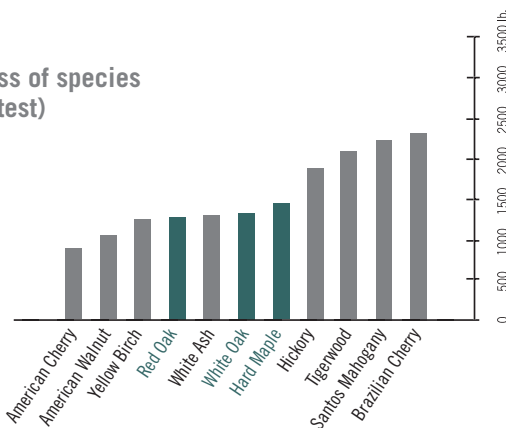


Radiant floor = **yes**



Type of installation :  
Nailed, stapled or glued

Hardness of species  
(Janka test)



## Applicable standards

### Surface burning ASTM-E-84

Class C (varies according to wood species)

Flame Spread Index : 100 to 150

Smoke Development: 75 to 400 (according to wood species)

### Abrasion resistant of the finish (Taber test)

Nema LD3 : 2 500 cycles

Static friction coefficient ASTM D2394 : 0,56

## Certifications

### FSC® certification (RA-COC-003583):

FSC available on request

### Air quality: Greenguard Gold certification

<http://greenguard.org/en/index.aspx>

### ISO 9001-2008



Origin: Montmagny, Québec, Canada

## Accessories

Stair nosings • Reducers • Quarter-Rounds • T-Mouldings • Flush Mount Air Vents • Thresholds • Touch-up Pens.

## Packaging

	Platform	Engineered 1/2 in			Engineered 3/4 in			
	Width	3 1/4 in (83 mm)	4 1/2 in (114 mm)	6 1/2 in (165 mm)	4 1/2 in (114 mm)	6 1/2 in (165 mm)	8 1/8 in (206 mm)	8 1/8 in PLUS (206 mm)
Box	Content	28 sq.ft. (2,60 m <sup>2</sup> )	25 sq.ft. (2,32 m <sup>2</sup> )	22 sq.ft. (2,04 m <sup>2</sup> )	20 sq.ft. (1,86 m <sup>2</sup> )	14,5 sq.ft. (1,35 m <sup>2</sup> )	18 sq.ft. (1,7 m <sup>2</sup> )	17,5 sq.ft. (1,6 m <sup>2</sup> )
	Dimensions (L x W x H) in	87 x 10,5 x 3	86 x 9 x 3	85 x 7 x 3	85 x 9,5 x 3,25	85 x 7 x 3	84 x 8,5 x 3,25	88,5 x 8,5 x 3,25
	Dimensions (L x W x H) cm	221 x 27 x 7,6	218 x 24 x 8	216 x 18 x 8	216 x 24 x 8	216 x 18 x 7,6	213 x 22 x 8,3	224 x 22 x 8,3
	Weight (approximate)	56 lb (25 kg)	50 lb (23 kg)	38 lb (17 kg)	55 lb (25 kg)	40 lb (18 kg)	50 lb (23 kg)	49 lb (22,2 kg)
Skid	Content	52 boxes 1456 sq.ft. (135 m <sup>2</sup> )	52 boxes 1300 sq.ft. (121 m <sup>2</sup> )	60 boxes 1320 psq.ft. (122,63 m <sup>2</sup> )	40 boxes 800 sq.ft. (74,32 m <sup>2</sup> )	60 boxes 870 sq.ft. (81 m <sup>2</sup> )	50 boxes 900 sq.ft. (83,6 m <sup>2</sup> )	50 boxes 875 sq.ft. (81,2 m <sup>2</sup> )
	Dimensions (L x W x H) in	87 x 42 x 42	86 x 36 x 42	85 x 42 x 36	85 x 38 x 36	85 x 42 x 36	84 x 43,5 x 37	88,5 x 42 x 36
	Dimensions (L x W x H) cm	221 x 107 x 107	218 x 91 x 107	216 x 107 x 91	216 x 97 x 91	216 x 107 x 91	213 x 109 x 94	224 x 107 x 91
	Weight (approximate)	2900-3200 lb (1315-1451 kg)	2600-3000 lb (1179-1361 kg)	2300-2700 lb (1045-1227 kg)	2160-2335 lb (981-1061 kg)	2350-2540 lb (1068-1155 kg)	2500 lb (1134 kg)	2450 lb (1111,3 kg)

## References

- Mercier Wood Flooring Engineered, Herringbone and LOC Installation Guide
- Mercier Wood Flooring Warranty Document
- Mercier Wood Flooring Maintenance Guide